

High-Speed Laser Marking as Easy as Printing

## → ProMarker Series



[www.troteclaser.com](http://www.troteclaser.com)



Compact laser marking stations  
Easy to handle – just like an office printer  
Versatile marking field up to 180 x 180 mm  
Quick and durable markings

## → Professional laser marking easier than ever

The ProMarker Series offers easy high speed laser processing of metal and plastic parts, such as promotional articles, gifts, dataplates and many more. The innovative and already pre-installed and included DirectMark laser software acts like a printer driver, marking directly from any graphics, CAD or label printing software. Choose between the ProMarker 100, an open laser class 4 package including a precise Z-axis or the compact desktop laser workstation ProMarker 300, which excels in its ergonomics and laser safety (laser class 2).



Professional laser tools: ProMarker 100 and ProMarker 300

### → Maintenance free fiber laser

The core of any ProMarker system is a high-speed, air cooled, maintenance free fiber laser. It enables you to mark metals and many plastics without the use of any consumables. The daily cost of ownership and maintenance is reduced to a minimum.

#### Lenses for every application

Lenses of focal length F 100 and F 254 are available in addition to the standard F 160 lens. They can be exchanged at any time to vary the size of the marking field. You are optimally equipped for all your tasks.

#### Focus finder (optional)

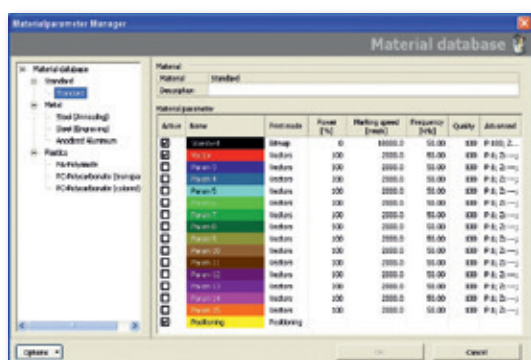
A second laser pointer enables precise focusing directly on the workpiece without the need for additional equipment.

#### Pilot laser for border marking

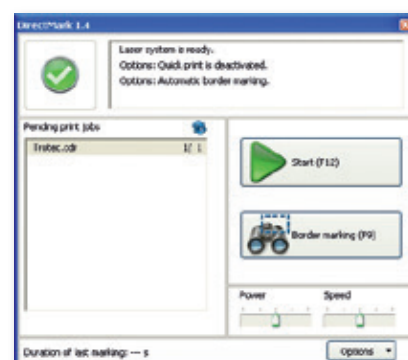
All ProMarker systems have a laser pointer for setting up the workpiece fast and easily. It displays the edges of the marking and help you in adapting the size of the mark. This saves set-up time.

#### Mechanical, electrical or software-controlled Z-axis

The optimum setup for your application: Select either a mechanical, an electrical or a software-controlled Z-axis and control it via mechanical wheel, in the software or via the control panel directly on the machine.



Material database



Spool window with job queue

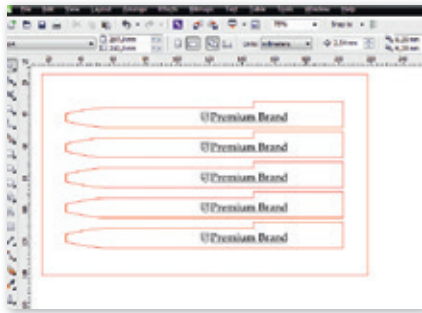
## → As easy as printing? As easy as printing!

The pre-installed laser software acts like a printer driver and works with all graphics, CAD and label printing software. There is no need to learn a new software program: use your usual graphics software to create a design and send it to the laser using the print command. No converting or data import necessary, just print.

All of the settings can be easily adjusted in the print window. The material database contains a wide range of materials and allows you to add your own. Save frequently recurring jobs in a job queue.

# → Let your creativity run wild

## In 3 steps from design to perfect application



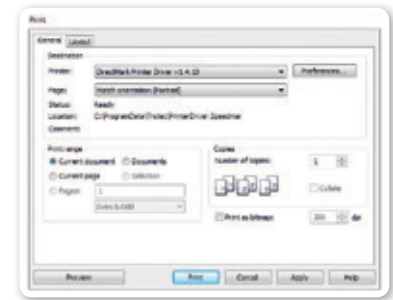
Use any graphics, CAD or label printing software

### 1. Creation of design

Use your daily design software to create the motif and place logos, serial numbers or codes. DirectMark works with all common design software packages as well as with office programs. There is no need to get used to a new working environment and therefore no need for time consuming personnel training. Due to the extremely precise galvo laser head, literally everything that can be drawn can be processed with the laser.

### 2. Printing command

Send your design to the laser with a simple printing command via the DirectMark printer driver function. All parameters can be set within the printer driver window, just like with an office printer. The preset material database assists you in finding the right speed, power level or process. Enlarge the database with your own individual and often used materials. With a click on „Print“ the laser starts working.



DirectMark printer driver



Perfect results within seconds

### 3. Finished application

Depending on the material and chosen process, the laser job is finished within a few seconds. Unlike with methods like printing, the finished product does not need any post processing or drying time. Since all parameters can be stored, any post productions look exactly the same as the first run. Discover the possibilities.

## → As versatile as your applications



Production of high quality give aways in large lot sizes



Enlarge your business to data plates, name tags and other engraved signage products



Add value to daily products to reach higher margins



Finest details and precise marking on every part size



Perfect contrasts on metals and plastics



Creative design of electronical devices



Constant quality also on plastics

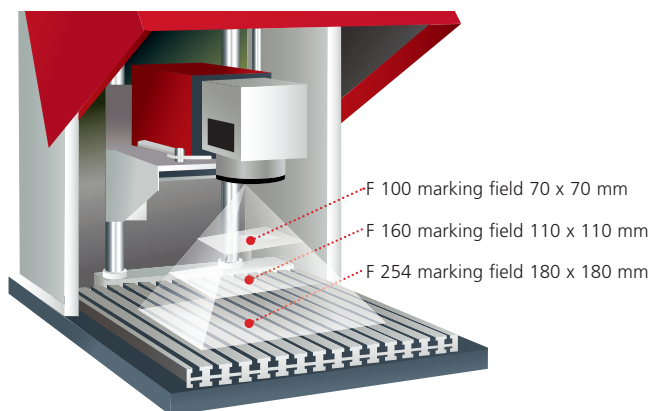


Individualization of gifts

# → The ProMarker Series

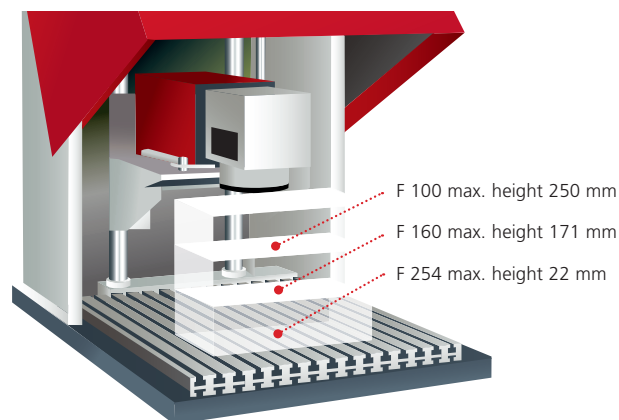
	ProMarker 100	ProMarker 300
<b>Exterior dimensions (W x H x D) in mm</b>	400 x 786 x 450 375 x 666 x 800 with electrical Z-axis	572 x 653 x 851
<b>Maximum marking area (depends on lens) in mm</b>	up to 180 x 180	up to 180 x 180
<b>Maximum working area in mm</b>	Z-post or electrical Z-axis	Mechanical or software-controlled Z-axis
<b>Maximum component height in mm</b>	531 399 with electrical Z-axis	250
<b>Laser source</b>	Laser source: Pulsed, maintenance free fiber laser. Air cooled	Laser source: Pulsed, maintenance free fiber laser. Air cooled
<b>Laser power</b>	10 - 20 Watt	10 - 20 Watt
<b>Door</b>	–	manual
<b>Laser safety class</b>	4	2
<b>Maximum marking speed</b>	10.000 mm/s (640 cps/s)	
<b>Software</b>	DirectMark	

→ **Trotec Laser – developed and built in Austria.**



## Marking field dimensions

The marking field dimension depends on the lens. The greater the focal length, the larger the marking field.



## Maximum height of work piece

The component height depends on the lens. The greater the focal length, the smaller the maximum component height.

[www.troteclaser.com](http://www.troteclaser.com)

Trotec Produktions u. Vertriebs GmbH  
Linzer Str. 156, A-4600 Wels, [trotec@troteclaser.com](mailto:trotec@troteclaser.com)  
Tel. +43 / 72 42 / 239-7002, Fax +43 / 72 42 / 239-7380

[www.facebook.com/trotec](https://www.facebook.com/trotec)

[twitter.com/TrotecLaser](https://twitter.com/TrotecLaser)

